

“Our child has autism, but that doesn’t stop him from shining.

Some days are hard, both for him and for us. We get through them by focusing on the person he is, not his diagnosis. There are some things he can't do yet, but we're working on it. He learns new things every day and there is so much more he can do now. Our child is a happy kid.”



You Can Help...

the Shining Through Centre give our children with autism a great future.

Providing a centre-based ABA program is extremely costly. Fundraising is a vital part of the success of the Shining Through Centre and our children. We need your help.

- Become a corporate sponsor
- Become a donor
- Support our fundraising events and programs
- Give a gift-in-kind in lieu of money
- Become an advocate of our centre
- Spread the word and raise awareness
- Volunteer your time or experience
- Donate items and services we can use



Shining Through Centre

EDUCATING CHILDREN WITH AUTISM

Woodbridge Campus

7365 Martin Grove Road
Woodbridge, ON L4L 9E4
(t) 905.851.7955
(f) 905.851.1132

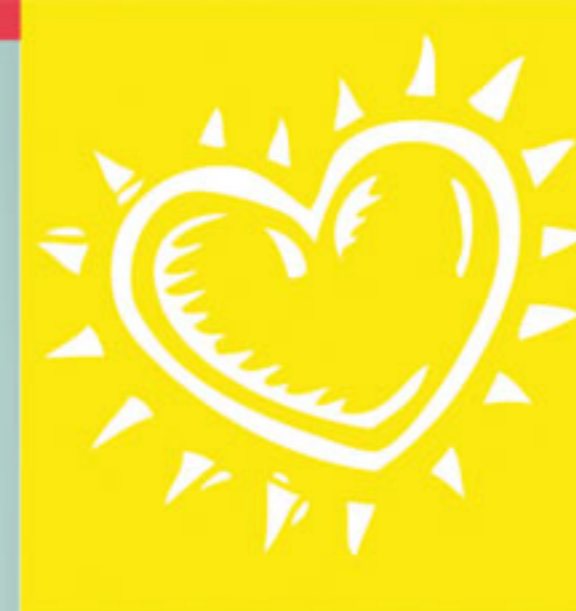
North York Campus

250 Beecroft Road
Toronto, ON M2N 6W3
(t) 416.782.4816
(f) 416.782.9983

www.shiningthrough.ca

(e) info@shiningthrough.ca

Canadian Charitable Donation Reg. Number 86402 2769 RR0001



**Shining
Through
Centre**

EDUCATING CHILDREN
WITH AUTISM

**Giving Children with Autism
a Chance to Shine**



What is Autism?

Autism is a complex developmental disability

the result of a neurological disorder that can seriously limit, if not eradicate, the possibility for the affected child to interact in a healthy and constructive manner. As such, autism prevents children from interacting typically with others, affecting various aspects of their social and psychological development.

Diagnoses of autism are at a record high, with 1 in 90 children showing some form of autism, more than 1000% increase over the last 10 years. In addition, the incidence rate of autism is showing no sign of decline, thereby leading experts to conclude that autism therapy and intervention is of critical importance in the years to come. Still, both the cause and the reason for the skyrocketing incidence rates, remain disturbingly unknown.

Although we don't know what causes autism, we have a good handle on what can be done to help children afflicted with it. We know that intensive behavioural intervention is essential in order for children with autism to develop critical life skills and to reach their full potential. This is the very essence of the work we undertake every day at the Shining Through Centre for children with autism.

The Shining Through Centre

a not-for-profit charitable organization and a recognized leader in the field of autism, providing service excellence in therapy, education, research, and awareness to affected children and their families. Through our work, we provide intensive, comprehensive, and individualized therapeutic and educational programs to each of our children, based on the empirically validated principles of Applied Behaviour Analysis (ABA).

To learn more about autism or The Shining Through Centre please visit our website. We also invite you to visit the centre. Contact us and we will be happy to arrange a tour of the facility

www.shiningthrough.ca
info@shiningthrough.ca
905-851-7955

Our Mission:

Enhance the lives of those affected by autism

Our Objectives:

- Maximize the potential of children with autism by providing educational and therapeutic interactions, based on the recognized principles of ABA, with the goal of developing within each of our children the skills they need to grow at optimal rates and acquire the skills they need for a fulfilling future
- Provide the families of our children with the effective skills, resources and vital strategies needed to help better understand, relate to and educate their children with autism, as well as cope with the considerable challenges of raising them.
- Be a leading community learning resource and facility - providing instruction, consulting, therapy and educational advice and cutting edge research to families, educators, and other corporate entities and partners that work in the field of autism

Applied Behaviour Analysis (ABA)

Applied Behaviour Analysis (ABA) is an empirically-based method of teaching individuals with autism and one of the only interventions that has been scientifically proven to generate observable, measurable and lasting progress in children with autism. Using one-on-one instruction and programs tailored to each child's strengths and needs, ABA therapists teach communication, socialization, self-care, academics, safety, leisure and social/play skills.

ABA techniques break down complicated learning sequences into smaller steps that are taught one at a time to the child. Reinforcement and prompting are coupled to the teaching techniques in order to help the child assimilate and retain the newly acquired skills. The key to this type of intervention is the precise analysis of progress and accurate records made possible by continuous data recording and summary procedures.

The Program:

Our centre-based program is personalized for each child and overseen by a fully-credentialed Executive Director, a Board-certified Clinical Director, and a registered Clinical Psychologist.

The Centres Offer:

- Full and half day programs, year-round, tailored to the developmental needs of each child
- Individual therapy as well as therapeutically goal-oriented group and social instruction
- Consistency of staffing and programming, as well as a robust supervision and excellence program for therapists
- Opportunities for children to interact socially in a supervised, developmentally-useful and growthful program
- Therapeutically-focused parent training, both on site at our centres and in the home.
- Preschool integration as well as tailored transition-to-school programs

